



GRANTS MILL CROSSING

Welcome to Grants Mill Crossing-Townhomes

Our Grants Mill Crossing community is tucked into the rolling hills of Irondale, AL. The location is unbeatable! Private and secluded, the families who live here have a wonderful advantage of being protected from the hustle and bustle of the city, yet minutes away from everything! Whether it's the airport, downtown Birmingham, the city of Mountain Brook, the Summit, the Galleria, Bass Pro Shop or the Grand Outlet shope in Grand River in Leeds... Anything, you name it, is convenient to this wonderful neighborhood!

Come and see this community to appreciate its location, incredible value, and experience the exceptional quality of a Tower Home! We build a product superior to other new construction homes on the market, especially new homes built in this price range! At Grants Mill Crossing you will find open, flexible floor plans, elegant architectural details, along with upscale features and finishes that come standard to each home. We truly are unlike any other community in the Irondale area at prices you won't believe.

About the Builder

Price Hightower began Tower Homes with an unwavering commitment to excellence. Twenty-one years later, his integrity, determination and vision to be the best home building company in the state of Alabama has led to over 1,000 new homes sold and a matchless home-buying experience. From land development to commercial building to residential construction, his goal has always been to build “WOW!”

Tower Homes has learned how to construct the best houses around while making home ownership easy for you! Price believes a home is where your story begins. His commitment to his homelife, family and faith have been integral parts of his success in the building industry. His superior reputation has led him to become one of the Top 5 Largest Home Builders in Birmingham, as well as one of 16 Graduate Master Builders in Alabama. Price is a life-long resident of Birmingham and seeks to make the city an even better place for families to call home. Tower’s homes and communities reflect his faithful dedication to excellence and building the “BEST” house on the market.

Each Tower project is a reflection of Price’s diligent work ethic, well-planned designs, and choice of highest quality materials. He is involved in each phase of construction and loves handing you the keys to your new home!



Tower Homes

2106 Devereux Circle
Birmingham, AL 35243

(P) 205.970.2363

(F) 205.970.2365

www.Tower-Homes.com



The Somerset

Grants Mill Crossing, Phase III • Irondale, Alabama



Home Information

Starting at \$199,900

1,207 Htd. Square Feet

2 Bedrooms

2 Bathrooms

1 Story

1-Car Garage



FIRST FLOOR

**The renderings and floor plans above are artistic concepts.*

Details and dimensions may vary, as well as standard and optional features. Such information, including the stated price is subject to change.

GRANTS MILL
CROSSING



**TOWER
HOMES**

www.Tower-Homes.com

For more information, contact:
Sandy Reeves: 205.365.3298
Matthew Lepore: 205.447.7472

The Manchester

Grants Mill Crossing, Phase III • Irondale, Alabama



Home Information

Starting at \$198,500

1,315 Htd. Square Feet

2 Bedrooms

2 Bathrooms

1-Story

1 Car Garage



FIRST FLOOR

**The renderings and floor plans above are artistic concepts.*

Details and dimensions may vary, as well as standard and optional features. Such information, including the stated price is subject to change.

GRANTS MILL
CROSSING



TOWER
HOMES

www.Tower-Homes.com

For more information, contact:
Sandy Reeves: 205.365.3298
Matthew Lepore: 205.447.7472

The Winchester

Grants Mill Crossing, Phase III • Irondale, Alabama



Home Information

Starting at \$213,900

1,487 Square Feet (not incl. garage)

3 Bedrooms

3 Bathrooms

2-Story

1-Car Garage



**The renderings and floor plans above are artistic concepts.*

Details and dimensions may vary, as well as standard and optional features. Such information, including the stated price is subject to change.

GRANTS MILL
CROSSING



www.Tower-Homes.com

For more information, contact:
Sandy Reeves: 205.365.3298
Matthew Lepore: 205.447.7472

DISCONTINUED at GMC

The Taylor

Grants Mill Crossing, Phase III • Irondale, Alabama



Home Information

Starting at \$198,900

1,431 Htd. Square Feet

3 Bedrooms

2 Bathrooms

1-Story



FIRST FLOOR

**The renderings and floor plans above are artistic concepts.*

Details and dimensions may vary, as well as standard and optional features. Such information, including the stated price is subject to change.

GRANTS MILL
CROSSING

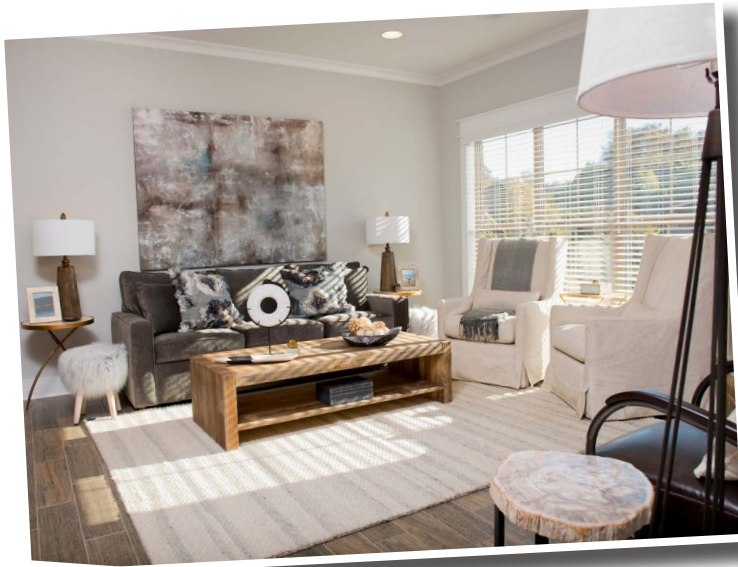


TOWER
HOMES

www.Tower-Homes.com

For more information, contact:
Sandy Reeves, 205.365.3298
Sandy@Tower-Homes.com

Our Portfolio/Interiors



Homes we have built in the Birmingham area



Visit our model home today and meet our Agents



BEST
best house

Community Map

The Terraces at Grants Mill • Irondale, Alabama



GRANTS MILL
CROSSING

TOWER
HOMES

Driving Directions

3894 Grants Lane, Irondale, AL 35210

From downtown Birmingham, take I-20E/I-59N toward Atlanta/Gadsden. Keep right at the fork to take I-20E toward Atlanta. From I-20E, take exit 133 toward US-78/Kilgore Memorial Drive. At the end of the ramp, turn right onto Grants Mill Road. In 1.3 miles, our Grants Mill Crossing neighborhood will be on your left. Turn left onto Grants Way to enter the community.



Sandy Reeves

REALTOR

205.365.3298

sandy@tower-homes.com

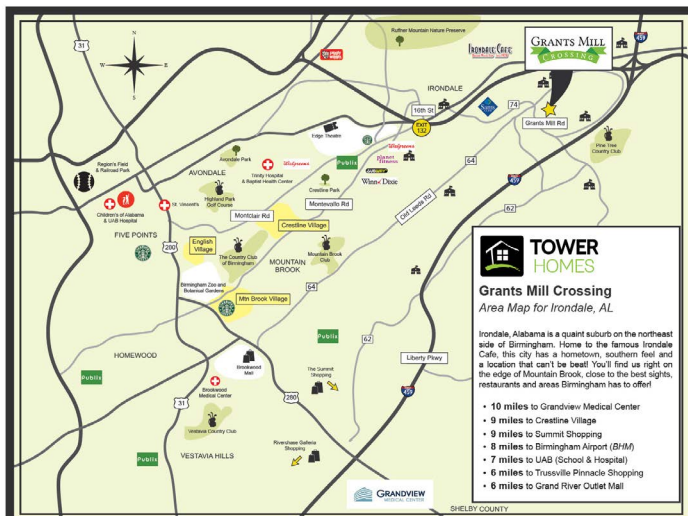


Matthew Lepore

REALTOR

205.447.7472

matthew@tower-homes.com



TOWER
HOMES

Grants Mill Crossing
Area Map for Irondale, AL

Irondale, Alabama is a quaint suburb on the northeast side of Birmingham. Home to the famous Irondale Cafe, this city has a hometown, southern feel and a location that can't be beat! You'll find us right on the edge of Mountain Brook, close to the best sights, restaurants and areas Birmingham has to offer.

- 10 miles to Grandview Medical Center
- 9 miles to Crestline Village
- 9 miles to Summit Shopping
- 8 miles to Birmingham Airport (BHM)
- 7 miles to UAB (School & Hospital)
- 6 miles to Trussville Pinnacle Shopping
- 6 miles to Grand River Outlet Mall

Grants Mill Crossing-Townhomes, Irondale AL, Community by Tower Homes

Tower Homes love to give back to communities



Big Oak Ranch

A Christian home for children needing a chance

BIG OAK RANCH

We, at Tower Homes, are honored to partner with Big Oak Ranch's mission to relieve the suffering of children and give every child a chance at a great life. When any Tower home is sold, a portion of our selling price is given to Big Oak Ranch to support the incredible, Kingdom-building work they are doing daily.



RESTORATION ACADEMY

In December of 2015 Tower Team had a privilege to bless Children in Restoration Academy.



Restoration Academy Provides quality, Christ-centered education mostly to children from predominantly lower income families. The School serves children from K5-12 and is located in Fairfield, AL.



Tower Homes Salutes our Heroes!

>SPECIAL FOR OUR HOMETOWN HEROES<

Teachers

City Employees

First Responders

Doctors

Medical Residency Students

Firefighters





Tower Homes appreciates all that you do for us, and we want to honor you by extending a special **\$1,000** in free upgrades and by paying **\$1,000** in closing costs for any **Hometown Hero** that buys a new Tower home.

Get more information online:
www.Tower-Homes.com
or call: 205.970.2363

Visit one of our model homes today!



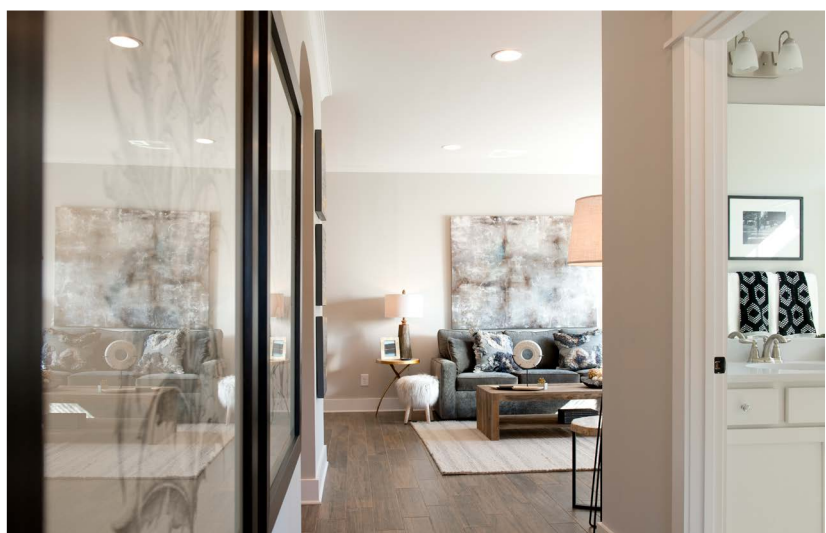
\$1,000 in FREE upgrades and \$1,000 in closing cost!

HONORING HOMETOWN HEROES

Military, First Responders, Firefighters, Doctors, Medical Residency Students, Teachers, City Employees!

Our gift from the Tower family to Yours! Tower Homes appreciates all that you do for us and we want to honor you by extending a special \$1,000 in free upgrades and by paying \$1,000 in closing costs for any Hometown Heroes that buy a new Tower home.

Home is where Your story begins...



See all Tower Homes communities on our website:

www.Tower-Homes.com

Connect with us on Social Media



You Tube

