

Woodridge

GARDENDALE, AL

Features:

- 64 Single family homes
- Open floor plans
- Classic Architectural Collection
- Latest design
- 18 Wooded acres of nature trails
- Customizing options
- Built with energy efficiency standards
- Moen fixtures
- Stainless steel appliances

New Homes • Gardendale AL • Community by Tower Homes

Community Overview

Welcome to Woodridge in Gardendale. This community features 64 new single-family homes and, its surrounded by nature and private hiking trails, is ideal for anyone who loves an active lifestyle.

Woodridge features homes from our Classic and Craftsman Collection. The traditional neighborhood, with the latest architectural and designer style homes, is nestled in a beautiful wooded setting. Residents will be surrounded by nature trails which can serve as a scenic pathway to grassy areas for weekend picnics.

The convenient location of Woodridge offers a short commute to a local Publix, Gardendale High School, Gardendale Civic Center, Gardendale Urban Trail System and I-65. This gives residents easy access to the greater Birmingham area to spend quality time with family and friends.



Bradley



Hamilton

What to expect?

**64
homes**

*Woodridge neighborhood
will feature 64 single family
homes from our
Classic Collection*

*You can customize one of our
popular floor plans in our
State of The Art Design Studio*

**Multiple
Floor Plans**

**Move-in
Ready**

*Come customize your
dream home
or select one of our
move in ready homes*

*Visit our fully furnished
model home. Our Sales
Agents are on site daily*

**Furnished
Model
Home**

**Community
Features**

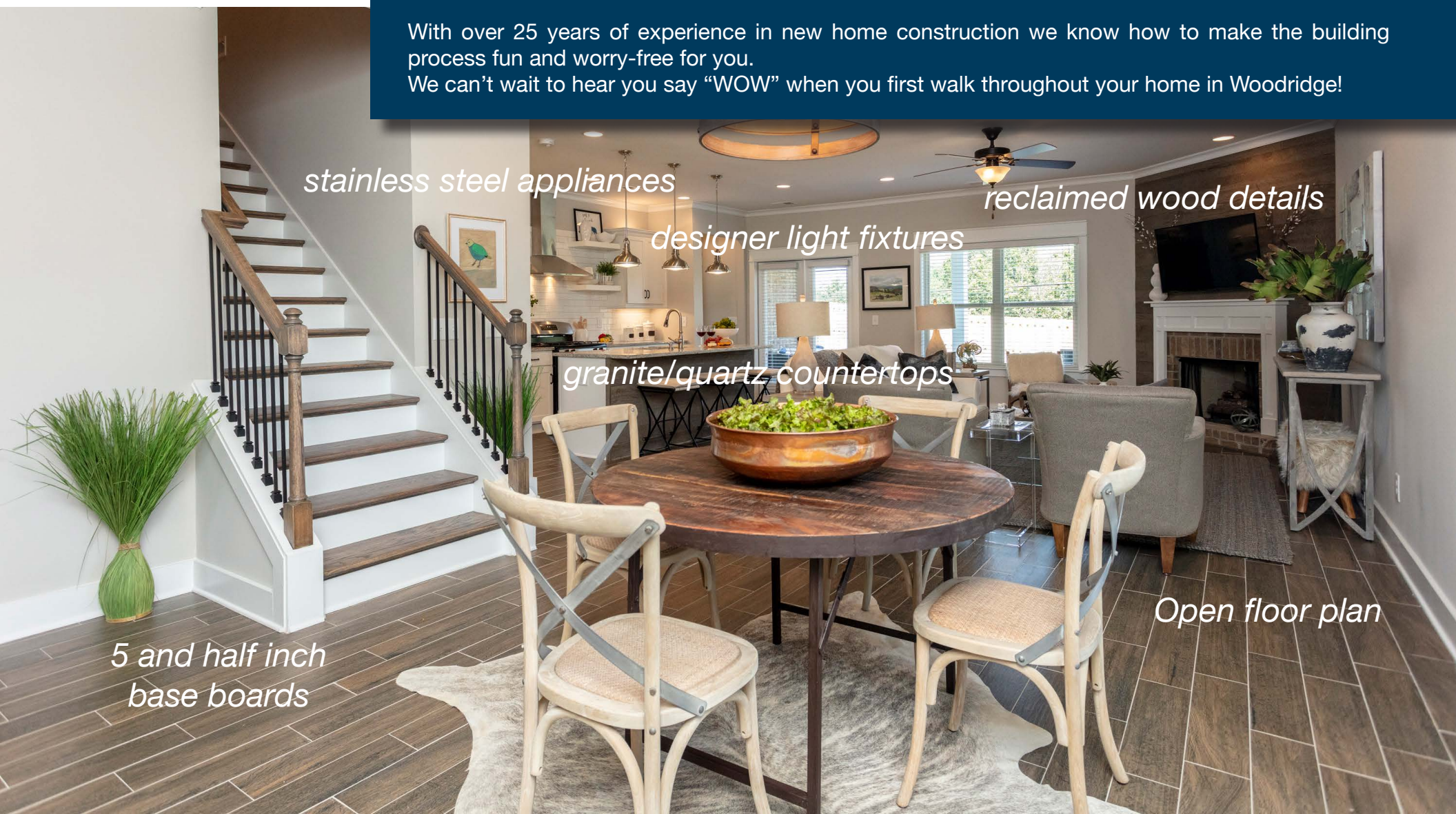
*Woodridge community
features hiking trails with
scenic overlook, street lights,
and sidewalk to encourage an
active lifestyle*

Our team at Tower Homes is proud to introduce the latest floor plans from our Classic and Craftsman Architectural Collection. We meticulously think through every aspect in creating the home designs, and pay close attention to detail while drawing each floor plan. Our team strives to deliver the BEST quality and lasting, functional design for our home buyers.

If you choose to build your new home, you can select and customize your favorite floor plan with our Interior Designer at our state-of-the-art design studio. You will get to choose interior and exterior finishes that will personalize your new home.

With over 25 years of experience in new home construction we know how to make the building process fun and worry-free for you.

We can't wait to hear you say "WOW" when you first walk throughout your home in Woodridge!



stainless steel appliances

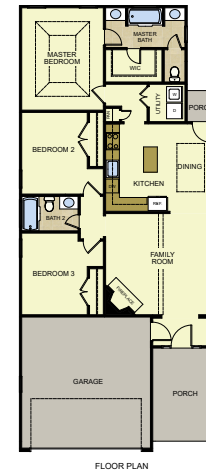
reclaimed wood details

designer light fixtures

granite/quartz countertops

Open floor plan

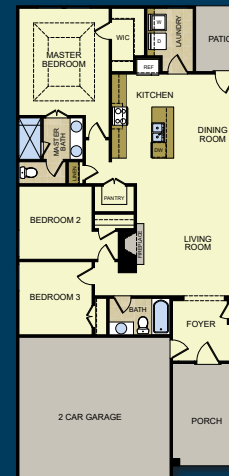
*5 and half inch
base boards*



Floor Plans

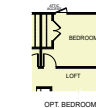
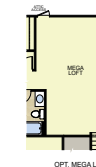
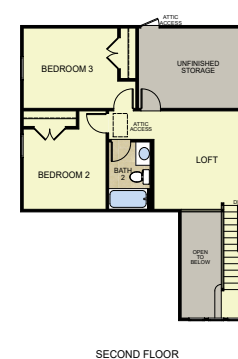
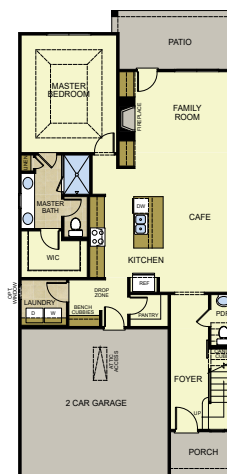
ASHFIELD

-  3 Bedrooms
-  2 Bathrooms
-  2-Car Garage
-  2-Story



ASHFORD

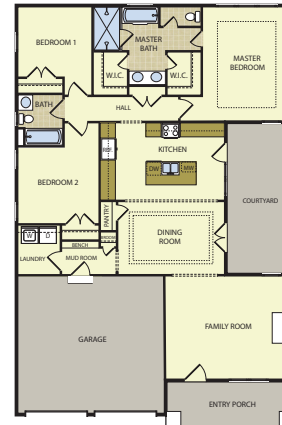
-  3 Bedrooms
-  2 Bathrooms
-  2-Car Garage
-  1-Story



BROWNING

-  3/4 Bedrooms
-  2 Bathrooms
-  2-Car Garage
-  2-Story

Renderings may include optional upgrades.



Renderings may include optional upgrades.

BROOKE (4 elevations)

-  3 Bedrooms
-  2 Bathrooms
-  2-Car Garage
-  1-Story



FIRST FLOOR

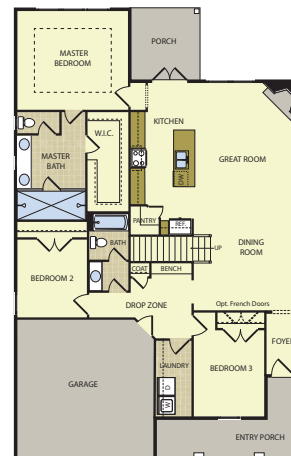
Renderings may include optional upgrades.

BARKLEY

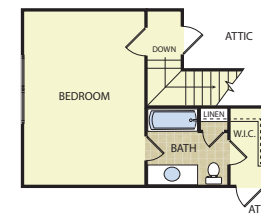
-  4 Bedrooms
-  3 Bathrooms
-  2-Car Garage
-  2-Stories



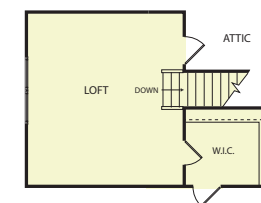
SECOND FLOOR



FIRST FLOOR



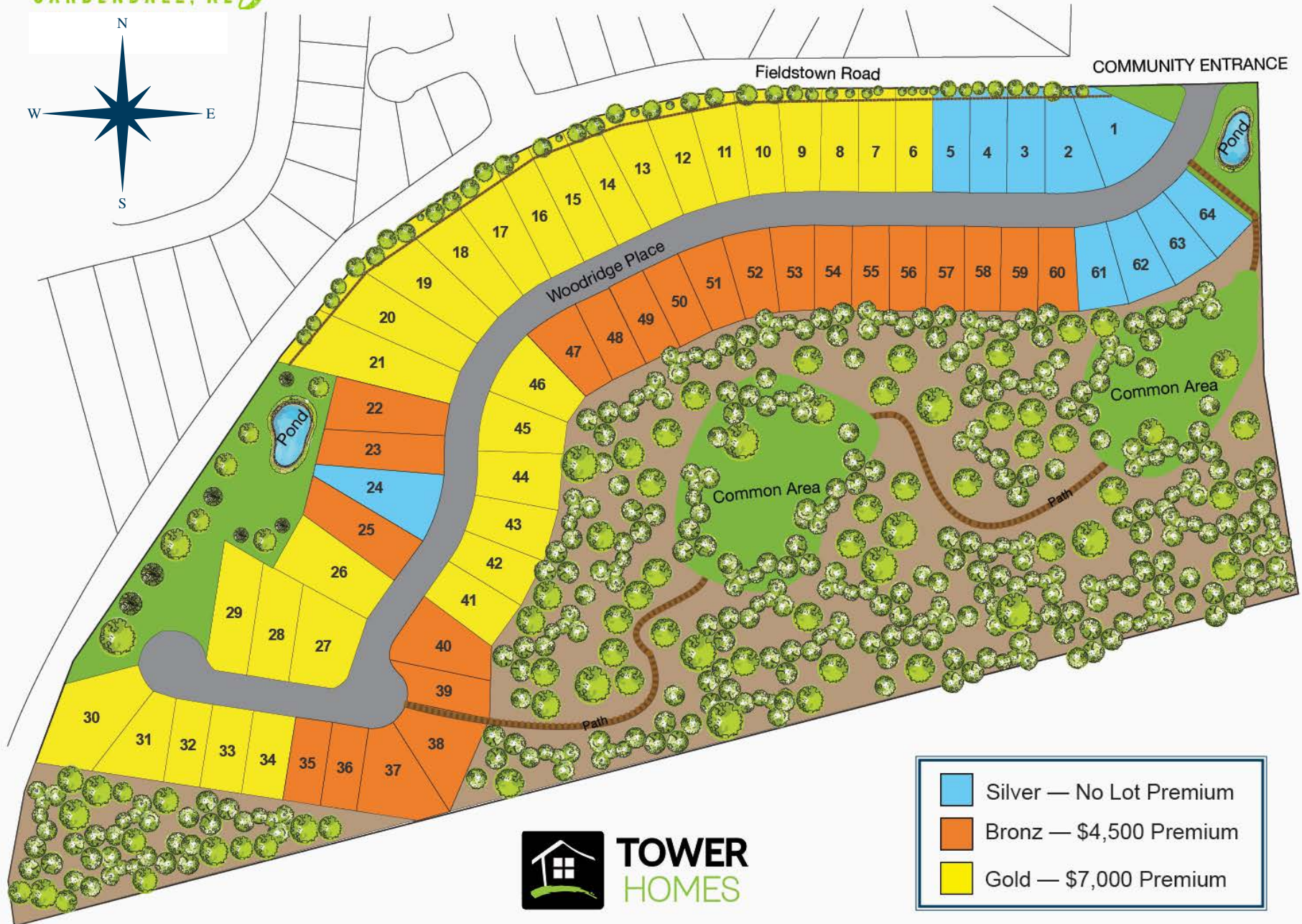
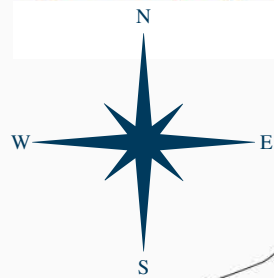
OPTIONAL



OPTIONAL

HAMILTON (2 elevations)

-  3/4 Bedrooms
-  2 Bathrooms
-  2-Car Garage
-  1 1/2-Story





Meet the Builder

Price Hightower began Tower Homes with an unwavering commitment to excellence. Twenty-one years later, his integrity, determination and vision to be the best home building company in the state of Alabama has led to over 1,000 new homes sold and a matchless home-buying experience. From land development to commercial building to residential construction, his goal has always been to build “WOW!”

Tower Homes has learned how to construct the best houses around while making home ownership easy for you! Price believes a home is where your story begins. His commitment to his homelife, family and faith have been integral parts of his success in the building industry. His superior reputation has led him to become one of the Top 5 Largest Home Builders in Birmingham, as well as one of 16 Graduate Master Builders in Alabama. Price is a life-long resident of Birmingham and seeks to make the city an even better place for families to call home. Tower’s homes and communities reflect his faithful dedication to excellence and building the “BEST” house on the market.

Each Tower project is a reflection of Price’s diligent work ethic, well-planned designs, and choice of highest quality materials. Price and the team of employees at Tower Homes consider it a privilege to build the home of your dreams.

The BEST House

At Tower Homes we believe that good is not good enough. That's why we build the BEST House for you!

B ***Building Standards***

Our quality of construction will ensure that your home is stronger and better built than any other house like it on the market!

E ***Energy Efficiencies***

Our homes include fixtures and energy-saving solutions that promise to cut your monthly consumption—and, in turn, save you money.

S ***Selections***

We offer hundreds of options which allow you to personalize your new house—making your dream home a reality!

T ***Total Value***

We include top-quality construction competitively priced and a team of dedicated professionals with decades of experience in the home-building industry.





Sales Team:

Matthew Lepore
205.447.7472
matthew@tower-homes.com

Casey Hitt
205.559.4339
Casey@tower-homes.com



TOWER
HOMES

Woodridge
GARDENDALE, AL
www.tower-homes.com

RealtySouth™



TOWER
HOMES