

# The Ridge

GRANTS MILL CROSSING

## Features:

- **Four side brick architecture**
- **Open floor plans**
- **Latest designer trends**
- **Customizing options**
- **Built with energy efficiency standards**
- **Stainless steel appliances**
- **Convenient location to downtown Birmingham**
- **Community street lights**



**RealtySouth**™



**TOWER**  
HOMES

New Homes • Irondale AL • Community by Tower Homes



## Community Overview

Grants Mill Crossing is back and better than ever. At “The Ridge” in Grants Mill Crossing, you’ll find our latest floor plans – 3-4 bedroom homes with 2-2.5 baths, 2-car garages, and stunning design features.

This new phase of 72 single family homes offers a unique living experience starting in the \$250s. A prime location awaits you in the hills of Irondale, Alabama – with breathtaking views, premium lots, and brand new Tower Homes floor plans. Residents here will enjoy comfortable privacy, along with easy access to everything Birmingham has to offer. Minutes away are Shuttlesworth airport, downtown Bham, University of Alabama at Birmingham, The Summit shopping center, and more. Discover the lifestyle growing in Irondale, and find your home at The Ridge in Grants Mill Crossing.

Flexible open floor plans, craftsman and modern farmhouse architecture, stainless energy-efficient appliances, designer light fixtures, and exceptional features and finishes – all of these things come standard in a Tower Home. And, with just a visit to our design center you can customize your new home from top to bottom. Everything from the fixtures in the kitchen to the finishing touches in the master bathroom are up to you. So you can enjoy flawless entertaining with quartz countertops, painted cabinets, luxury tile flooring and much more. Your guests will be in awe when you show off coffered walls, reclaimed wood accents, and shiplap details. Create a beautiful life in a community unlike any other in the Irondale area.

Find the life that’s waiting for you in a Tower home at the Ridge at Grants Mill Crossing.

## What to expect?

**72  
homes**

*The Ridge will feature 72 single family homes from our Craftsman & Modern Farmhouse Architectural Collections. The homes will be built with four side brick.*

*You can customize one of our popular floor plans in our State-of-The-Art Design Studio*

**Variety of  
Floor Plans**

**Move-in  
Ready**

*Come customize your dream home or select one of our move-in ready homes*

*Visit our fully furnished model home. Our Sales Agents are on site daily*

**Furnished  
Model  
Home**

**Energy  
Efficiency**

*All our homes are built with the latest energy efficiency standards*



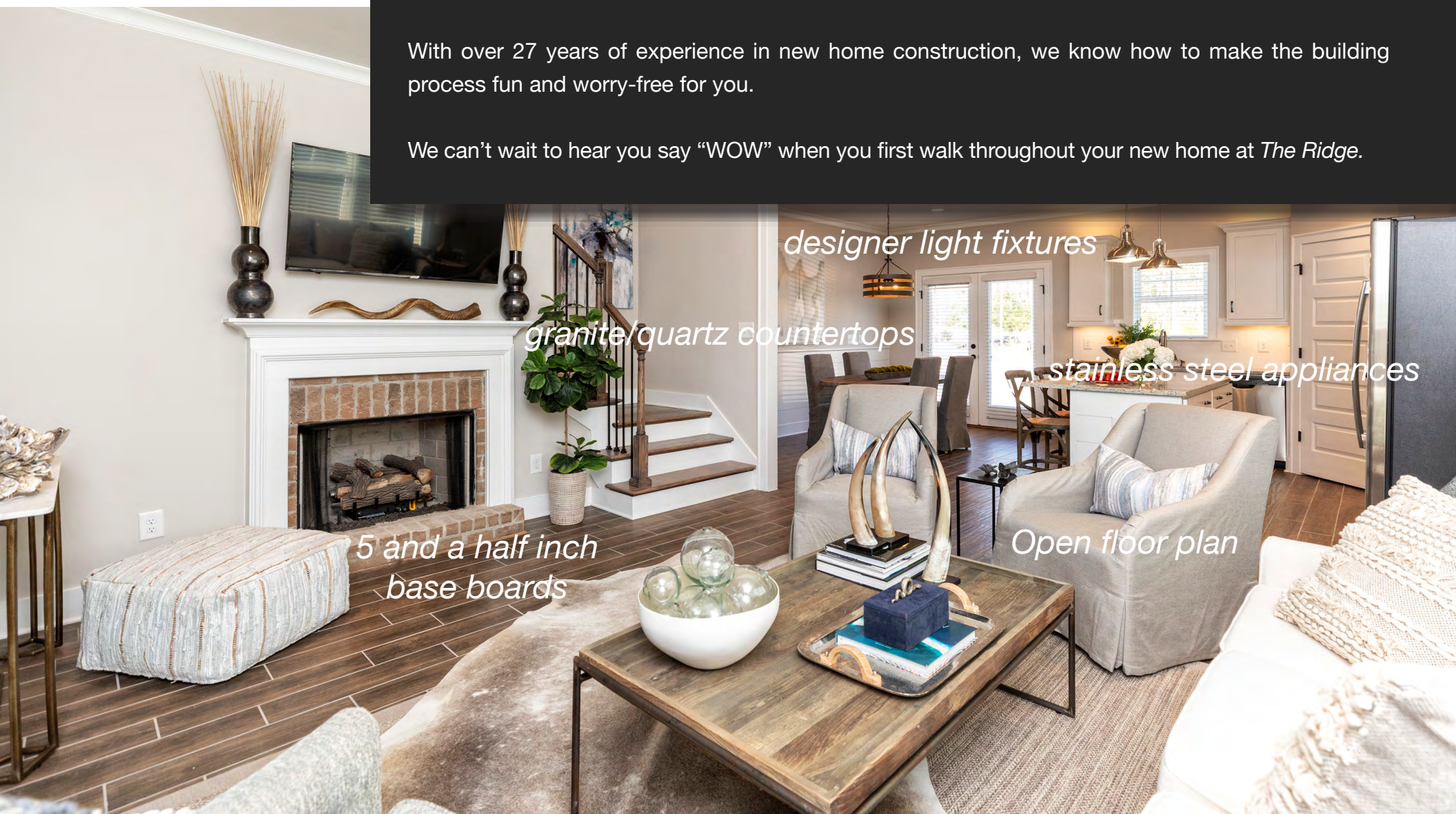


Our team at Tower Homes is proud to introduce the latest floor plans from our *Craftsman* and *Modern Farmhouse* Architectural Collections. We meticulously think through every aspect in creating the home designs, and pay close attention to detail while drawing each floor plan. Our team strives to deliver the BEST quality and lasting, functional design for our homebuyers.

If you choose to build your new home, you can select and customize your favorite floor plan with our Interior Designer at our state-of-the-art design studio. You will get to choose interior and exterior finishes that will personalize your new home.

With over 27 years of experience in new home construction, we know how to make the building process fun and worry-free for you.

We can't wait to hear you say "WOW" when you first walk throughout your new home at *The Ridge*.



*designer light fixtures*

*granite/quartz countertops*

*stainless steel appliances*

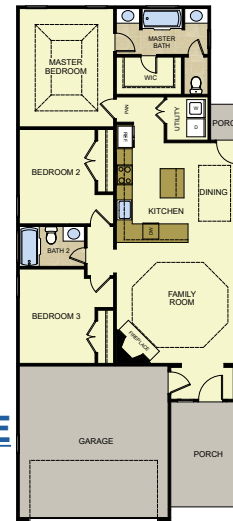
*Open floor plan*

*5 and a half inch  
base boards*





[CLICK HERE](#)

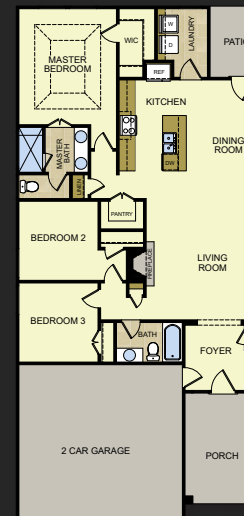


## Floor Plans

### ASHFIELD





1,266 Htd Sq/Ft

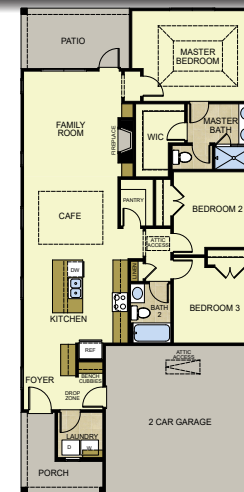
-  3 Bedrooms
-  2 Bathrooms
-  2-Car Garage
-  1-Story



### ASHFORD

1,384 Htd Sq/Ft

-  3 Bedrooms
-  2 Bathrooms
-  2-Car Garage
-  1-Story



### AVONDALE

1,412 Sq/Ft

-  3 Bedrooms
-  2 Bathrooms
-  2-Car Garage
-  1-Story

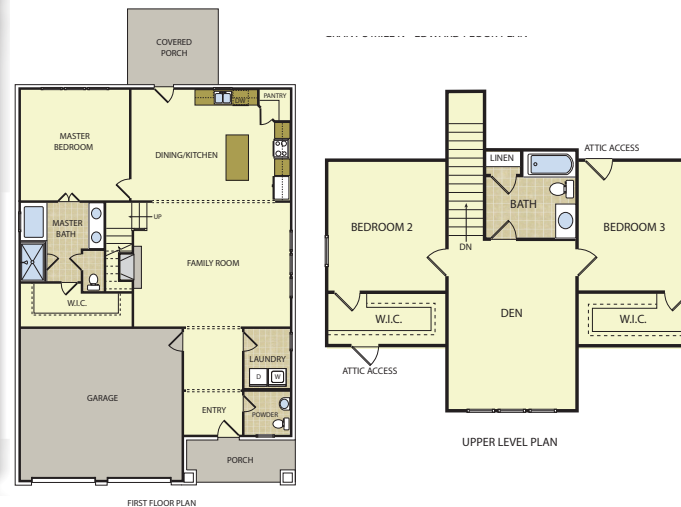




- BROWNING**
- 1,818 Htd Sq/Ft**
- 3/4 Bedrooms
  - 2.5 Bathrooms
  - 2-Car Garage
  - 2-Story



- BRADLEY**
- 1,670 Htd Sq/Ft**
- 3 Bedrooms
  - 2 Bathrooms
  - 2-Car Garage
  - 1-Story



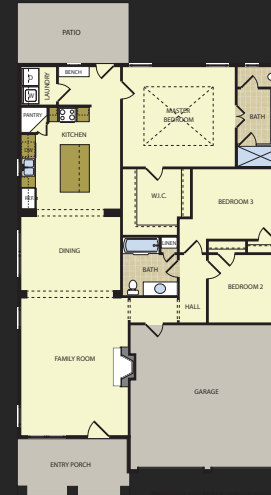
- EDWARD**
- 2,114 Htd Sq/Ft**
- 3 Bedrooms+Den
  - 2.5 Bathrooms
  - 2-Car Garage
  - 2-Story



## **FAIRMONT**





**1, 516 Htd Sq/Ft**

-  3 Bedrooms
-  2 Bathrooms
-  2-Car Garage
-  1-Story



## **HAMILTON**

**1, 720 Htd Sq/Ft**

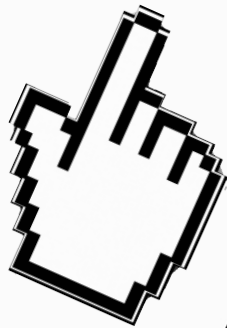
-  3-4 Bedrooms
-  2-3 Bathrooms
-  2-Car Garage
-  1-Story

*\*The renderings and floor plans above are artistic concepts. Details and dimensions may vary, as well as standard and optional features.*

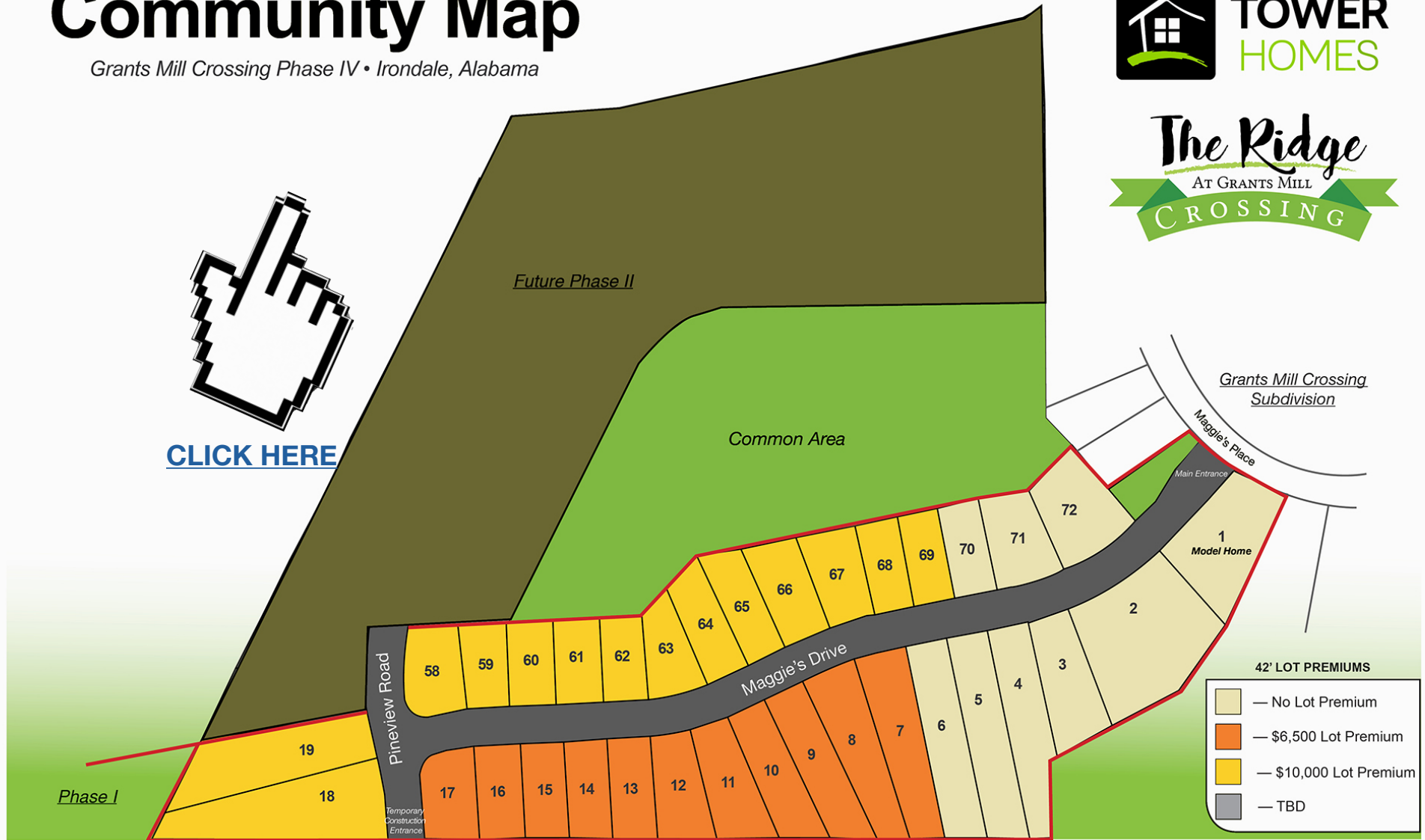


# Community Map

Grants Mill Crossing Phase IV • Irondale, Alabama



[CLICK HERE](#)





## Meet the Builder



Price Hightower began Tower Homes with an unwavering commitment to excellence. Twenty-seven years later, his integrity, determination and vision to be the best home building company in the state of Alabama has led to over 1,000 new homes sold and a matchless home-buying experience. From land development to commercial building to residential construction, his goal has always been to build “WOW!”

Tower Homes has learned how to construct the best houses around while making home ownership easy for you! Price believes a home is where your story begins. His commitment to his homelife, family and faith have been integral parts of his success in the building industry. His superior reputation has led him to become one of the Top 5 Largest Home Builders in Birmingham, as well as one of 16 Graduate Master Builders in Alabama. Price is a life-long resident of Birmingham and seeks to make the city an even better place for families to call home. Tower’s homes and communities reflect his faithful dedication to excellence and building the “BEST” house on the market.

Each Tower project is a reflection of Price’s diligent work ethic, well-planned designs, and choice of highest quality materials. Price and the team of employees at Tower Homes consider it a privilege to build the home of your dreams.





[CLICK HERE](#)

## ***The BEST House***

At Tower Homes we believe that good is not good enough. That's why we build the BEST House for you!

**B**

### ***Building Standards***

Our quality of construction will ensure that your home is stronger and better built than any other house like it on the market!

**E**

### ***Energy Efficiencies***

Our homes include fixtures and energy-saving solutions that promise to cut your monthly consumption—and, in turn, save you money.

**S**

### ***Selections***

We offer hundreds of options which allow you to personalize your new house—making your dream home a reality!

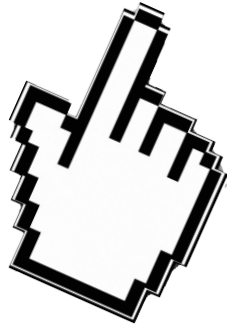
**T**

### ***Total Value***

We include top-quality construction competitively priced and a team of dedicated professionals with decades of experience in the home-building industry.



## Photo Gallery



[CLICK HERE](#)



**Sales Team:**



**Sandy Reeves**

**205.365.3298**

**[Sandy@tower-homes.com](mailto:Sandy@tower-homes.com)**



**Matthew Calhoun**

**205.222.5874**

**[mattcalhoun@hotmail.com](mailto:mattcalhoun@hotmail.com)**



**TOWER  
HOMES**

***RealtySouth***<sup>TM</sup>



**[www.tower-homes.com](http://www.tower-homes.com)**